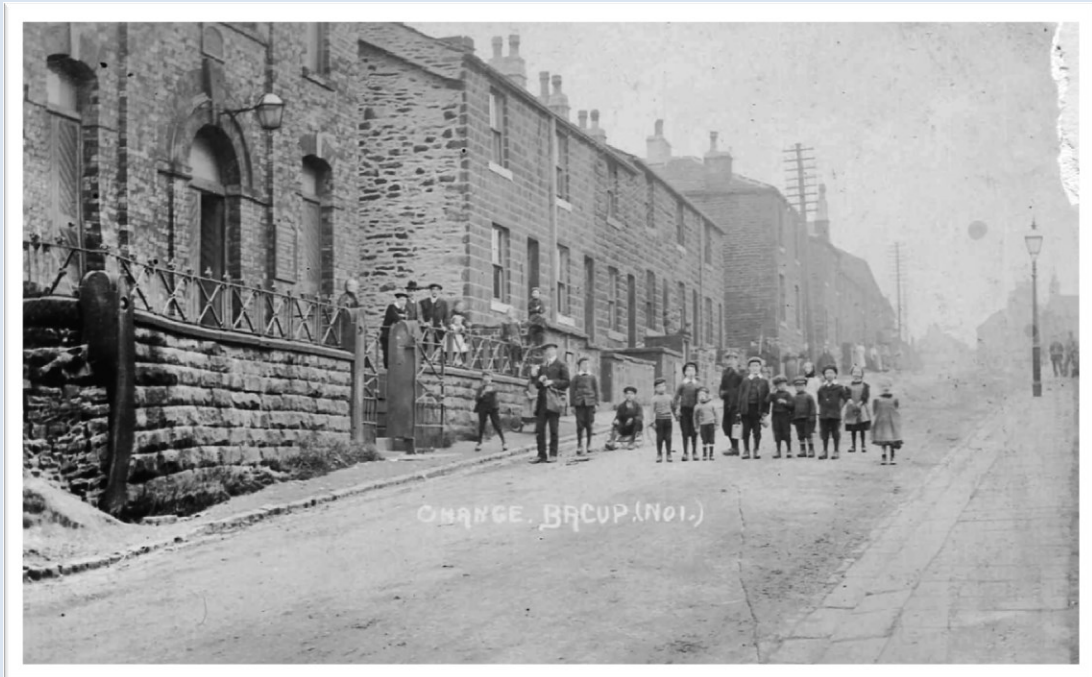


Change Chapel



Change Primitive Methodists first started out in a house at Lower Change, Todmorden Road on 12 September 1858. Like many other small chapels in Bacup the premises became too small and they began to raise funds to build a bigger chapel, finally achieving their goal in 1871 when they opened their chapel shown above in the left of the picture. Change chapel as it was known closed to services in 1919.

